

Data solutions for the whole cargo supply chain



Simplify cargo shipment planning



Seize competitive advantage



Manage and maximise supply chain activities



Deliver an enhanced customer service experience



Reduce operational and IT costs

Customised airline schedules data

WDF – receive global flights schedules in this flexible format for easy integration. View, manipulate and analyse bulk airline schedule files and deliver improved customer service with trusted content.

- Point to point passenger and cargo schedules data.
- Flexible content parameters.
- Files delivered daily or a frequency of your choice.

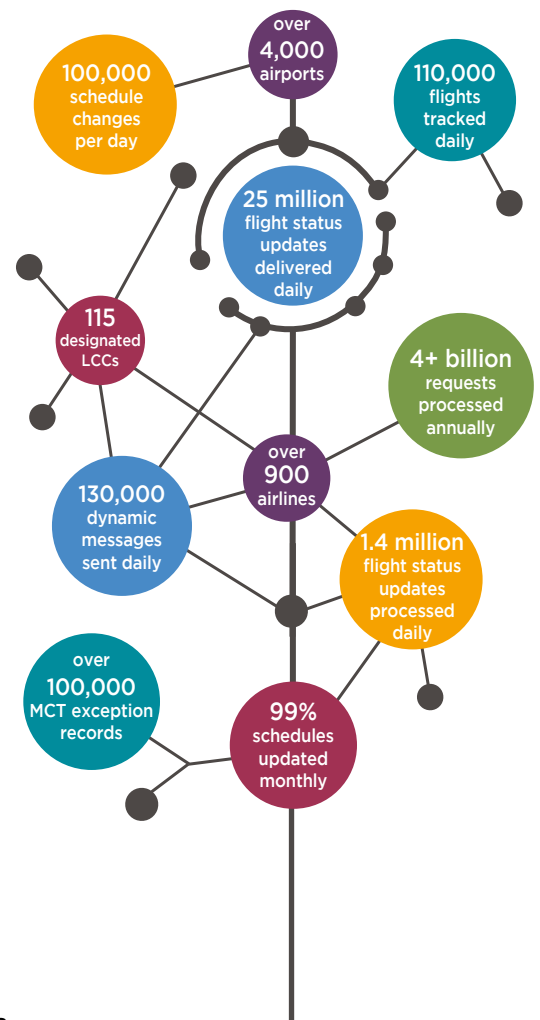
Accurate flight status information

Flightview XML – current flight status information delivered in an easily readable XML format. Data for an individual flight, all flights on an airline or flights to/from specific airports is queried and delivered periodically, ensuring you have the latest flight information.

Flight Leg reports – selected sets of past flight records filtered to geographies, airlines or other criteria to analyse irregular operations or other events, delivered in formats for you to sort, filter and analyse as required.

Custom reports based on our vast historical air travel data

- **Ad-hoc reports and analysis:** based on OAG's historical data including flight schedules, connections, passenger traffic, and flight status.
- **Dashboards & Models:** highlight trends, frequencies, gaps and discrepancies and characterise flight densities, flight paths, connectivity and route coverage.
- **Large-scale extracts:** raw data for external analysis, such as global schedules for a year or all connections between 90,000 O&Ds.
- **Custom analysis:** Analysis based on coupling customer-specific data with OAG's historical data to gain key insights on the customer's business.



Search the best flight for your shipment with Cargo Flights

Search all shipment options in one place for faster and more informed purchasing decision.

Manual connections

The screenshot shows the 'Manual Connections' search results. The search criteria are: Origin: LHR, Destination: SYD, Via: SIN, Leg 1 Date: 15/02/16, Leg 2 Date: 16/02/16. The results are divided into two legs. Leg 1 (LHR - SIN) shows flights with various equipment types (77W, 388, 744) and transit times. Leg 2 (SIN - SYD) shows connecting flights to Sydney with various equipment types (777, 388, 332) and transit times. The VA 5683 flight is selected in the first table.

Inforwarding – the definitive communications channel for the cargo community

Unique community message board where airlines can post - and forwarders can access operational announcements as they happen.

User-friendly and intuitive site makes it easy to target promotions by market, and delivers precisely the information forwarders are looking for.

Who uses our data?

- Freight forwarders
- Aviation logistics providers
- Commercial shippers
- Manufacturers
- Industry Analysts
- Government & regulatory bodies

“Our international customers operate in fast-paced markets. They rely on our Air Freight service to achieve their goals – and we rely on OAG. Via the Cargo Flights application, OAG provides us with worldwide flight schedules & cargo schedules assisting in flight & route planning, so that we in turn can deliver promised services to our customers every day.”

Amit Agarwal, Corporate Air Freight Tradelane & Procurement Specialist Panalpina Management Ltd. August 2014.



request more information today, visit:
www.oag.com/cargo